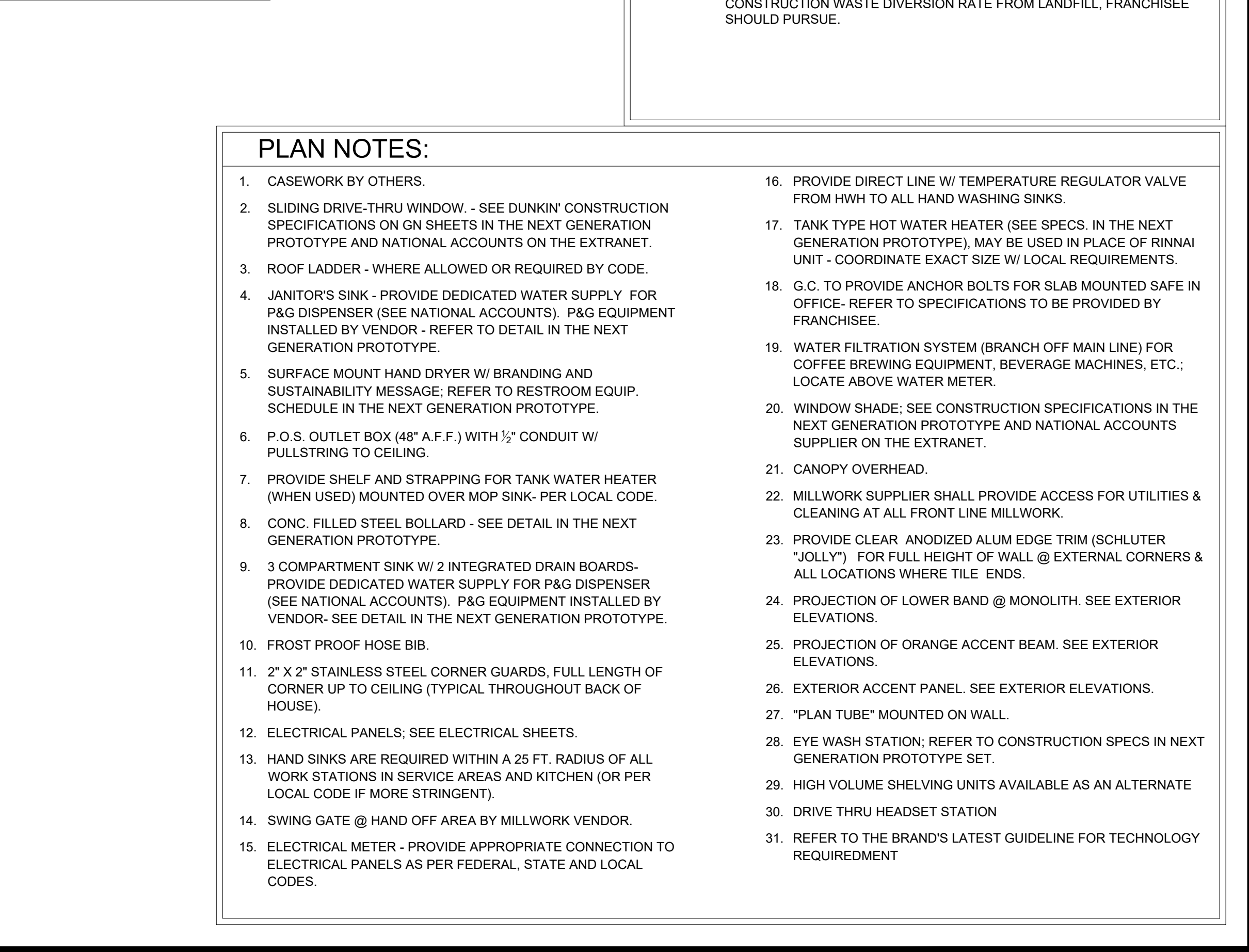
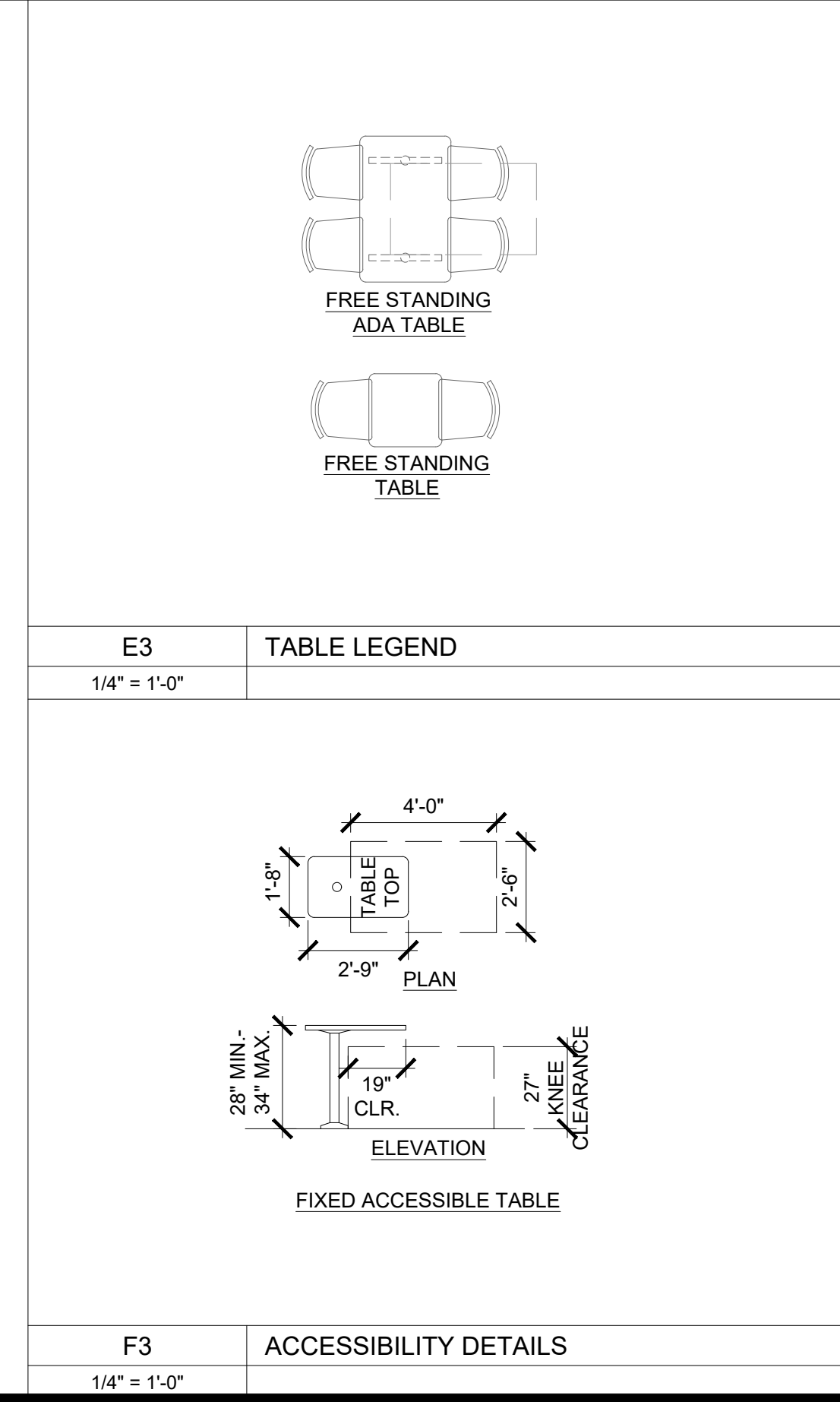
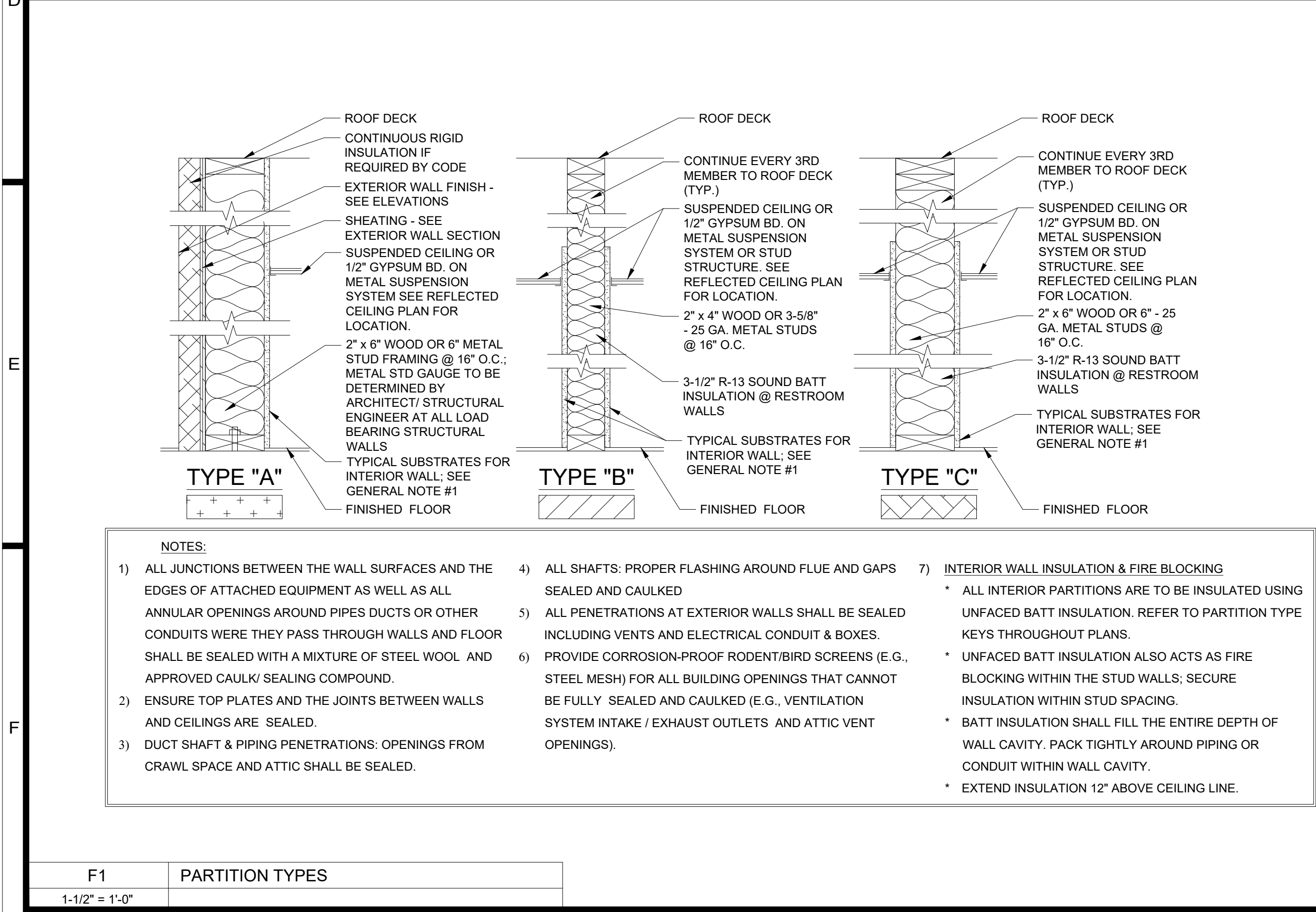


D1 FLOOR PLAN  
1/4" = 1'-0"



GENERAL NOTES:

1. TYPICAL SUBSTRATES FOR INTERIOR WALLS SHALL BE AS FOLLOWS:  
PREP/ KITCHEN AND STORAGE AREAS:  
0'-0" TO 3'-0" - 5/8" DUROCK CEMENT BOARD, 3'-0" AND ABOVE - 5/8" ORIENTED STRAND BOARD (OSB)  
SERVICE AREA:  
5/8" MIN. ORIENTED STRAND BOARD (OSB), 5/8" DUROCK CEMENT BOARD BEHIND PORCELAIN/ CERAMIC TILES  
SALES AND SEATING AREAS:  
5/8" GYPSUM BOARD, 5/8" DUROCK CEMENT BOARD BEHIND CERAMIC TILES, 5/8" ORIENTED STRAND BOARD @ DECORATIVE PLAM "WOOD" WALLS.  
RESTROOMS:  
5/8" DUROCK CEMENT BOARD
2. DIMENSIONS SHOWN ARE TO THE FACE OF FINISH.
3. REFER TO EQUIPMENT "K" SHEETS FOR INFORMATION REGARDING THE EQUIPMENT AND EQUIPMENT LAYOUT.
4. REFER TO NEXT GENERATION PROTOTYPE FOR DOOR SCHEDULE AND DOOR & FRAME TYPES.
5. THESE PLANS ARE CONSIDERED MINIMUM DUNKIN' CORPORATE DESIGN REQUIREMENTS. THE STRUCTURAL DESIGN, FOOTING DESIGN, ADA COMPLIANCE AND GENERAL BUILDING REQUIREMENTS MUST BE EVALUATED AND CERTIFIED BY AN ARCHITECT REGISTERED IN THE STATE WHERE THIS STRUCTURE IS TO BE BUILT.
6. SEE SITE PLAN PROVIDED BY OWNER FOR NUMBER AND LOCATION OF THE FOLLOWING SITE FURNISHINGS: TABLE WITH SEATING, ADA TABLE WITH SEATING, TRASH CAN NEXT TO EXTERIOR SEATING AREA, TRASH CAN WITH CHUTE NEXT TO DRIVE-THRU AREA, AND GROUNDSKEEPER SMOKING MANAGEMENT RECEPTACLE. SEE NATIONAL ACCOUNT SOURCE INFORMATION FOR MANUFACTURER / SUPPLIER.
7. PROVIDE FIRE EXTINGUISHERS, TYPE ABC, WALL HUNG, TOP @ 5'-0" A.F.F. (BY G.C.). - NUMBER AND LOCATION AS DETERMINED BY LOCAL CODE
8. IF LARGER OFFICE IS REQUIRED, EXPAND TOWARD B.O.H. NOT F.O.H. SEEK D.B.I. APPROVAL PRIOR TO PROCEEDING
9. LAYOUT NOTES:
  - A. ARCHITECT & G.C. TO ENSURE 40" MINIMUM CLEAR ACCESS INTO AND THROUGHOUT THE STORE FOR DELIVERY OF LARGE EQUIPMENT ITEMS.
  - B. FOR STORES WITH CELLARS, THE FLOOR, WALL, AND CEILINGS FINISHES WILL BE THE SAME FINISHES FOR PREP. AREA. REFER TO THE MASTER FINISH SCHEDULES IN THE NEXT GENERATION PROTOTYPE FOR THE PROPER FINISHES.
  - C. FOR LOCATIONS WITH INTERIOR WALK-INS, PROVIDE:
    - FLOOR DRAIN WITHIN 5' FT. OF WALK-IN FOR CONDENSATE DRAIN CONNECTION FROM INTERIOR OF WALK-IN (TYP.).
    - 2" MIN. AIR SPACE BETWEEN WALK-IN AND ALL ADJACENT WALLS.
  - D. FOR NON-DEPRESSED SLAB FOR WALK-IN BOX AN INTERIOR RAMP SHALL BE PROVIDED.
10. INDOOR AIR QUALITY MANAGEMENT REQUIREMENTS:
  - A. DURING CONSTRUCTION THE USE OF SMOKING/TOBACCO PRODUCTS INSIDE THE BUILDING IS PROHIBITED.
  - B. CONTRACTOR AND SUBCONTRACTORS SHOULD MAKE EVERY EFFORT TO MAINTAIN CLEAN WORK AREAS.
  - C. CONSTRUCTION ACTIVITIES THAT PRODUCE DUST SHOULD TAKE PLACE PRIOR TO HVAC STARTUP/USE, AND EVERY EFFORT SHOULD BE MADE TO DIRECT THESE POLLUTANTS TO THE OUTDOORS WITH FANS.
  - D. MATERIALS THAT ARE ABSORPTIVE SHOULD NOT BE BROUGHT ON-SITE UNTIL THE BUILDING IS SUFFICIENTLY DRIED IN, AND SHOULD BE ELEVATION FROM THE GROUND AND COVERED WITH VISQUEEN WHILE STORED ON SITE.
  - E. IF THE HVAC SYSTEMS WILL BE USED DURING CONSTRUCTION ACTIVITIES, TEMPORARY FILTRATION (MERV 8) SHOULD BE USED ON ALL RETURN AIR INTAKES, AND THE FILTERS INSIDE THE UNIT SHOULD BE REPLACED PRIOR TO BUILDING TURN OVER.
  - F. ALL INDOOR AIR QUALITY MANAGEMENT POLICIES OUTLINED ABOVE ARE PHOTOGRAPHED AT 25%, 50%, AND 75% PROJECT COMPLETION TO CONFIRM MEASURES WERE FOLLOWED.
11. CONSTRUCTION WASTE RECYCLING REQUIREMENTS:
  - A. ALL CONSTRUCTION-RELATED RECYCLABLE WASTE SHOULD BE RECYCLED/REUSED OR OTHERWISE DIVERTED FROM LANDFILL WHENEVER POSSIBLE.
  - B. AT MINIMUM ALL CONCRETE, METAL, AND PLASTIC THAT MEETS LOCAL RECYCLING STANDARDS SHOULD BE RECYCLED.
  - C. WHERE LOCAL MUNICIPALITIES OR VENDORS OFFER COMMINGLED RECYCLING OPPORTUNITIES TO HELP ACHIEVE OVER 50% CONSTRUCTION WASTE DIVERSION RATE FROM LANDFILL, FRANCHISEE SHOULD PURSUE.

PLAN NOTES:

1. CASEWORK BY OTHERS.
2. SLIDING DRIVE-THRU WINDOW. - SEE DUNKIN' CONSTRUCTION SPECIFICATIONS ON GN SHEETS IN THE NEXT GENERATION PROTOTYPE AND NATIONAL ACCOUNTS ON THE EXTRANET.
3. ROOF LADDER - WHERE ALLOWED OR REQUIRED BY CODE.
4. JANITOR'S SINK - PROVIDE DEDICATED WATER SUPPLY FOR P&G DISPENSER (SEE NATIONAL ACCOUNTS). P&G EQUIPMENT INSTALLED BY VENDOR - REFER TO DETAIL IN THE NEXT GENERATION PROTOTYPE.
5. SURFACE MOUNT HAND DRYER W/ BRANDING AND SUSTAINABILITY MESSAGE; REFER TO RESTROOM EQUIP. SCHEDULE IN THE NEXT GENERATION PROTOTYPE.
6. P.O.S. OUTLET BOX (48" A.F.F.) WITH 1/2" CONDUIT W/ PULLSTRING TO CEILING.
7. PROVIDE SHELF AND STRAPPING FOR TANK WATER HEATER (WHEN USED) MOUNTED OVER MOP SINK- PER LOCAL CODE.
8. CONC. FILLED STEEL BOLLARD - SEE DETAIL IN THE NEXT GENERATION PROTOTYPE.
9. 3 COMPARTMENT SINK W/ 2 INTEGRATED DRAIN BOARDS- PROVIDE DEDICATED WATER SUPPLY FOR P&G DISPENSER (SEE NATIONAL ACCOUNTS). P&G EQUIPMENT INSTALLED BY VENDOR- SEE DETAIL IN THE NEXT GENERATION PROTOTYPE.
10. FROST PROOF HOSE BIB.
11. 2" x 2" STAINLESS STEEL CORNER GUARDS, FULL LENGTH OF CORNER UP TO CEILING (TYPICAL THROUGHOUT BACK OF HOUSE).
12. ELECTRICAL PANELS; SEE ELECTRICAL SHEETS.
13. HAND SINKS ARE REQUIRED WITHIN A 25 FT. RADIUS OF ALL WORK STATIONS IN SERVICE AREAS AND KITCHEN (OR PER LOCAL CODE IF MORE STRINGENT).
14. SWING GATE @ HAND OFF AREA BY MILLWORK VENDOR.
15. ELECTRICAL METER - PROVIDE APPROPRIATE CONNECTION TO ELECTRICAL PANELS AS PER FEDERAL, STATE AND LOCAL CODES.
16. PROVIDE DIRECT LINE W/ TEMPERATURE REGULATOR VALVE FROM HHW TO ALL HAND WASHING SINKS.
17. TANK TYPE HOT WATER HEATER (SEE SPECS. IN THE NEXT GENERATION PROTOTYPE), MAY BE USED IN PLACE OF RINNAI UNIT. - COORDINATE EXACT SIZE W/ LOCAL REQUIREMENTS.
18. G.C. TO PROVIDE ANCHOR BOLTS FOR SLAB MOUNTED SAFE IN OFFICE- REFER TO SPECIFICATIONS TO BE PROVIDED BY FRANCHISEE.
19. WATER FILTRATION SYSTEM (BRANCH OFF MAIN LINE) FOR COFFEE BREWING EQUIPMENT, BEVERAGE MACHINES, ETC.; LOCATE ABOVE WATER METER.
20. WINDOW SHADE; SEE CONSTRUCTION SPECIFICATIONS IN THE NEXT GENERATION PROTOTYPE AND NATIONAL ACCOUNTS SUPPLIER ON THE EXTRANET.
21. CANOPY OVERHEAD.
22. MILLWORK SUPPLIER SHALL PROVIDE ACCESS FOR UTILITIES & CLEANING AT ALL FRONT LINE MILLWORK.
23. PROVIDE CLEAR ANODIZED ALUM EDGE TRIM (SCHLUTER "JOLLY") FOR FULL HEIGHT OF WALL @ EXTERNAL CORNERS & ALL LOCATIONS WHERE TILE ENDS.
24. PROJECTION OF LOWER BAND @ MONOLITH. SEE EXTERIOR ELEVATIONS.
25. PROJECTION OF ORANGE ACCENT BEAM. SEE EXTERIOR ELEVATIONS.
26. EXTERIOR ACCENT PANEL. SEE EXTERIOR ELEVATIONS.
27. "PLAN TUBE" MOUNTED ON WALL.
28. EYE WASH STATION; REFER TO CONSTRUCTION SPECS IN NEXT GENERATION PROTOTYPE SET.
29. HIGH VOLUME SHELVING UNITS AVAILABLE AS AN ALTERNATE
30. DRIVE THRU HEADSET STATION
31. REFER TO THE BRAND'S LATEST GUIDELINE FOR TECHNOLOGY REQUIREMENT

1439 Centre Ct., Ste 401  
Alexandria, LA 71301  
Ph: 318.445.3151  
F: 318.445.3988  
Em: adg@adgllc.net

REGISTERED ARCHITECT  
STATE OF LOUISIANA  
No. 145100  
EXPIRATION DATE 12/31/2026

**DUNKIN'** BASKIN-ROBBINS™  
1111 MacArthur Drive  
Alexandria, Louisiana 71301

PROJECT NO: 26010  
DRAWN: DJH  
CHECKED: WAT  
DATE: APRIL 2026  
LAST REV: 5-27-26

**A1.01**

© 2026, Alliance Design Group, LLC all rights reserved